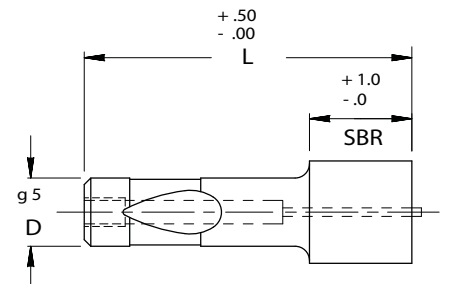
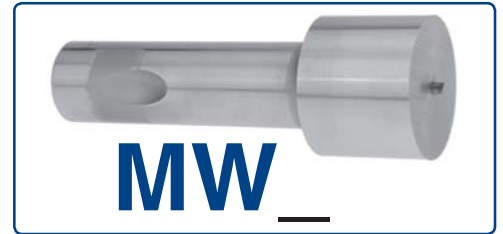
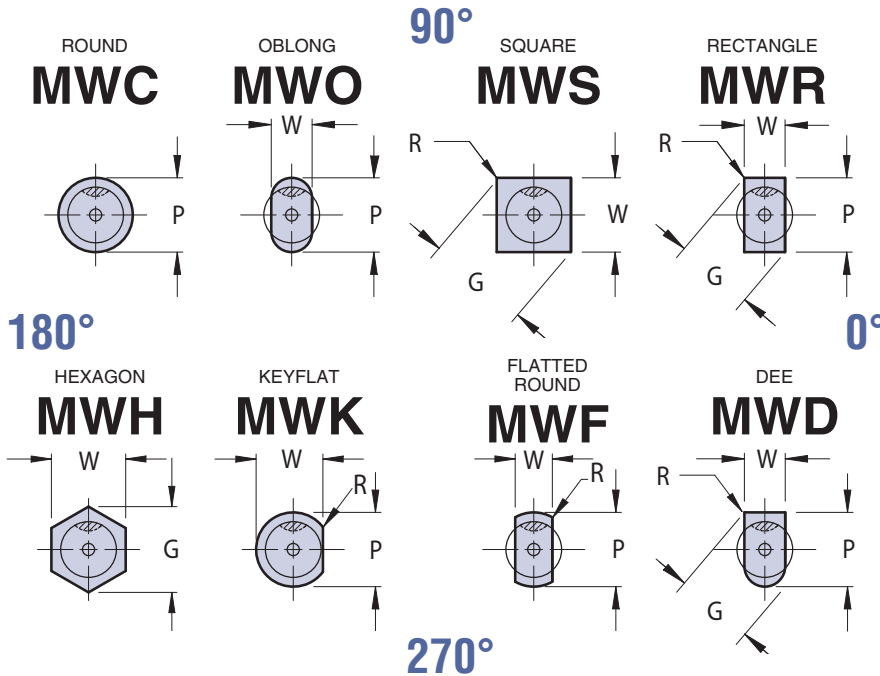


NOSE LARGE PUNCHES



HEAVY DUTY/EJECTOR



ORDER EXAMPLE:

(Reference page 4)

SPECIFY: QTY: TYPE "D" "L" DIMENSIONS P (OR P&W)

EXAMPLE: 6 MWO 16 90 12.0 x 7.0

Note: When ordering, standard quantity breaks are: 1, 2-3, 4-11, 12-23, 24-49, 50-99

VIEWS ARE SHOWN LOOKING THROUGH THE SHANK BUT DRAWN WITH SOLID LINES FOR CLARITY.

Complete design & CAD files visit WWW.MOELLERMCAD.COM

FOR STANDARD ALTERATIONS SEE PAGES 59-63.

CATALOG TYPE	SHANK DIA D	POINT LENGTH "S.B.R."	ROUND	SHAPE		OVERALL LENGTH "L"			EJECTOR SIZE
			RANGE P	MIN W	MAX G/P	80	90	100	
MW_10	10	16	10.10 - 25.00	3.00	25.00	X	X	X	MAE 4
MW_13	13	20	13.10 - 32.00	5.00	32.00	X	X	X	MAE 5
MW_16	16	25	16.10 - 38.00	6.00	38.00	X	X	X	MAE 5
MW_20	20	25	20.10 - 40.00	8.00	40.00	X	X	X	MAE 6
MW_25	25	25	25.10 - 47.00	10.00	47.00	X	X	X	MAE 6
MW_32	32	32	32.10 - 63.00	11.50	63.00	X	X	X	MAE 6
MW_40	40	32	40.10 - 63.00	14.00	63.00	X	X	X	MAE 6

Material

Steel: M2, HRC 60-63

Standard Point Tolerance

Round P $\begin{matrix} +.01 \\ -.00 \end{matrix}$

⊙ .01 P to D

Shape P, W $\pm .01$

⊙ .02 P to D

STANDARD BALL SEAT LOCATION IS AT 90° AS SHOWN. AVAILABLE AT 0°, 180°, 270°, FOR SAME PRICE.