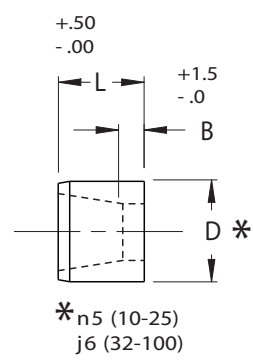
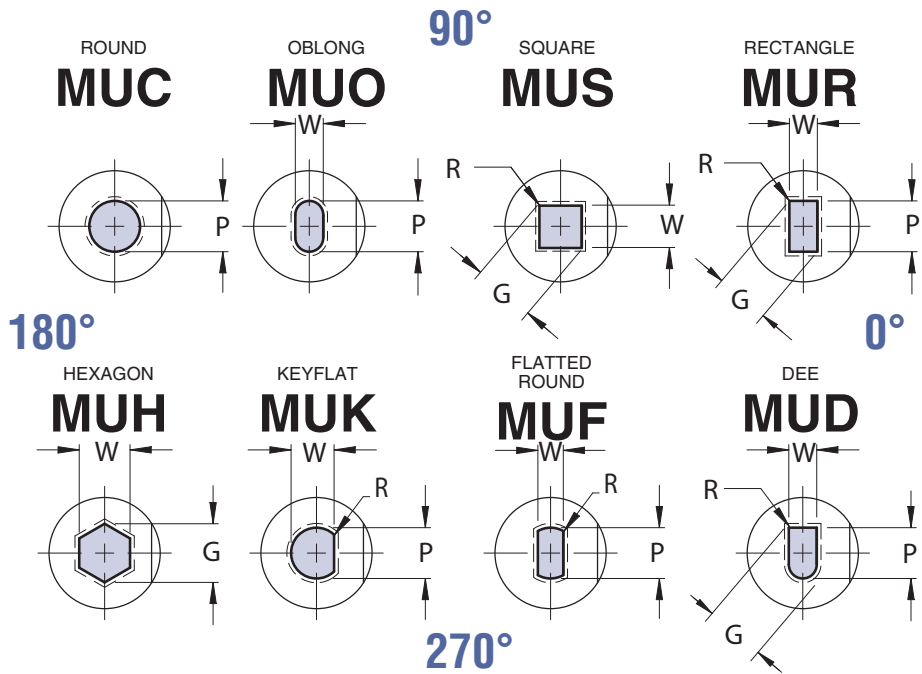


# PRESS FIT BUTTONS



## ULTRA LIFE/TAPER RELIEF



VIEWS ARE SHOWN LOOKING AT TOP FACE OF BUTTON.

STANDARD TAPER: ROUND 1° PER SIDE/SHAPED 1-1/2° PER SIDE

Complete design & CAD files visit [WWW.MOELLERMCD.COM](http://WWW.MOELLERMCD.COM)

CATALOG TYPE	BODY DIA D	LAND LENGTH "B"				ROUND RANGE P	SHAPE		OVERALL LENGTH "L"							
		NAPMA STD	ALTERNATES				MIN W	MAX G/P	20	22	25	28	30	32	35	40
			A	B	C											
MU_08	8	4.0	8.0		3.0	1.5 - 3.20	1.5	3.20	X	X	X	X	X	X	X	
MU_10	10	4.0	8.0		3.0	1.6 - 5.0	1.6	5.0	X	X	X	X	X	X	X	X
MU_13	13	5.0	8.0		3.0	3.0 - 7.2	1.8	7.2	X	X	X	X	X	X	X	X
MU_16	16	5.0	8.0		3.0	5.0 - 8.8	2.5	8.8	X	X	X	X	X	X	X	X
MU_20	20	5.0	12.0	20.0	3.0	5.5 - 11.0	3.2	11.0	X	X	X	X	X	X	X	X
MU_22	22	6.0	12.0	20.0	3.0	7.5 - 14.0	4.0	14.0	X	X	X	X	X	X	X	X
MU_25	25	6.0	12.0	20.0	3.0	9.5 - 16.5	4.8	16.5	X	X	X	X	X	X	X	X
MU_32	32	6.0	12.0	20.0	3.0	13.0 - 20.0	5.5	20.0	X	X	X	X	X	X	X	X
MU_38	38	8.0	12.0	20.0	3.0	16.0 - 26.0	6.4	26.0	X	X	X	X	X	X	X	
MU_40	40	8.0	12.0	20.0	3.0	16.6 - 26.0	6.4	26.0	X	X	X	X	X	X	X	

**Material**  
 Steel: STD A2, HRC 58-60  
 Alternate M2, HRC 60-63

**Standard Point Tolerance**

Round P  $\begin{matrix} +.01 \\ -.00 \end{matrix}$  .01 P to D

Shape P, W  $\begin{matrix} +.02 \\ -.00 \end{matrix}$  .02 P to D

Alternate Point Tolerance **T2**

P, W TOLERANCE  $\begin{matrix} +.005 \\ -.000 \end{matrix}$

P to D  $\begin{matrix} .008 \\ \text{tolerance symbol} \end{matrix}$

ONLY AVAILABLE BELOW 45 BODY DIAMETER

STANDARD FLAT LOCATION IS AT 0° AS SHOWN. AVAILABLE AT 90°, 180°, 270°, FOR SAME ALTERATION PRICE.

**ORDER EXAMPLE:**  
 (Reference page 4)

SPECIFY: QTY: TYPE "D" "L" "B" DIMENSIONS ALTERNATE TOLERANCE ALTERATION CODE STEEL

EXAMPLE: 6 MUC 25 30 A 15.0 T-2 F2 A2

EXAMPLE: 6 MUO 20 30 STD 10.0 x 5.0 STD F-2 M-2

Note: When ordering, standard quantity breaks are: 1, 2-3, 4-11, 12-23, 24-49, 50-99

FOR SLUG CONTROL AND STANDARD ALTERATIONS SEE PAGES 59-63.