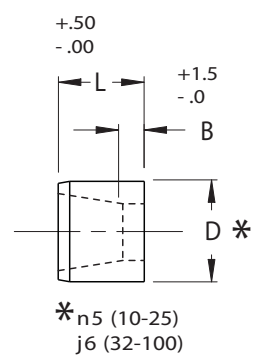
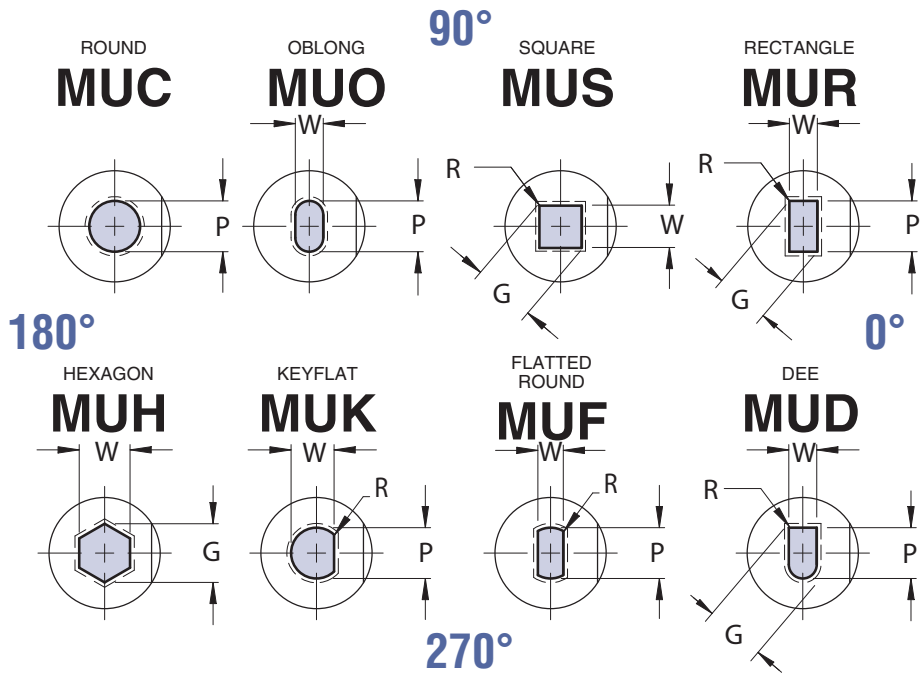


PRESS FIT BUTTONS



ULTRA LIFE/TAPER RELIEF



VIEWS ARE SHOWN LOOKING AT TOP FACE OF BUTTON.

STANDARD TAPER: ROUND 1° PER SIDE/SHAPED 1-1/2° PER SIDE

Complete design & CAD files visit WWW.MOELLERMCD.COM

| CATALOG TYPE | BODY DIA D | LAND LENGTH "B" | | | | ROUND RANGE P | SHAPE | | OVERALL LENGTH "L" | | | | | | | |
|--------------|------------|-----------------|------------|------|-----|---------------|-------|---------|--------------------|----|----|----|----|----|----|----|
| | | NAPMA STD | ALTERNATES | | | | MIN W | MAX G/P | 20 | 22 | 25 | 28 | 30 | 32 | 35 | 40 |
| | | | A | B | C | | | | | | | | | | | |
| MU_08 | 8 | 4.0 | 8.0 | | 3.0 | 1.5 - 3.20 | 1.5 | 3.20 | X | X | X | X | X | X | X | |
| MU_10 | 10 | 4.0 | 8.0 | | 3.0 | 1.6 - 5.0 | 1.6 | 5.0 | X | X | X | X | X | X | X | X |
| MU_13 | 13 | 5.0 | 8.0 | | 3.0 | 3.0 - 7.2 | 1.8 | 7.2 | X | X | X | X | X | X | X | X |
| MU_16 | 16 | 5.0 | 8.0 | | 3.0 | 5.0 - 8.8 | 2.5 | 8.8 | X | X | X | X | X | X | X | X |
| MU_20 | 20 | 5.0 | 12.0 | 20.0 | 3.0 | 5.5 - 11.0 | 3.2 | 11.0 | X | X | X | X | X | X | X | X |
| MU_22 | 22 | 6.0 | 12.0 | 20.0 | 3.0 | 7.5 - 14.0 | 4.0 | 14.0 | X | X | X | X | X | X | X | X |
| MU_25 | 25 | 6.0 | 12.0 | 20.0 | 3.0 | 9.5 - 16.5 | 4.8 | 16.5 | X | X | X | X | X | X | X | X |
| MU_32 | 32 | 6.0 | 12.0 | 20.0 | 3.0 | 13.0 - 20.0 | 5.5 | 20.0 | X | X | X | X | X | X | X | X |
| MU_38 | 38 | 8.0 | 12.0 | 20.0 | 3.0 | 16.0 - 26.0 | 6.4 | 26.0 | X | X | X | X | X | X | X | |
| MU_40 | 40 | 8.0 | 12.0 | 20.0 | 3.0 | 16.6 - 26.0 | 6.4 | 26.0 | X | X | X | X | X | X | X | |

Material
 Steel: STD A2, HRC 58-60
 Alternate M2, HRC 60-63

Standard Point Tolerance

Round P $\begin{matrix} +.01 \\ -.00 \end{matrix}$.01 P to D

Shape P, W $\begin{matrix} +.02 \\ -.00 \end{matrix}$.02 P to D

Alternate Point Tolerance **T2**

P, W TOLERANCE $\begin{matrix} +.005 \\ -.000 \end{matrix}$

P to D $\begin{matrix} .008 \\ \text{tolerance symbol} \end{matrix}$

ONLY AVAILABLE BELOW 45 BODY DIAMETER

STANDARD FLAT LOCATION IS AT 0° AS SHOWN. AVAILABLE AT 90°, 180°, 270°, FOR SAME ALTERATION PRICE.

ORDER EXAMPLE:
 (Reference page 4)

| SPECIFY: | QTY: | TYPE | "D" | "L" | "B" | P(OR P&W) DIMENSIONS | ALTERNATE TOLERANCE | ALTERATION CODE | STEEL |
|----------|------|------|-----|-----|-----|----------------------|---------------------|-----------------|-------|
| EXAMPLE: | 6 | MUC | 25 | 30 | A | 15.0 | T-2 | F2 | A2 |
| EXAMPLE: | 6 | MUO | 20 | 30 | STD | 10.0 x 5.0 | STD | F-2 | M-2 |

Note: When ordering, standard quantity breaks are: 1, 2-3, 4-11, 12-23, 24-49, 50-99

FOR SLUG CONTROL AND STANDARD ALTERATIONS SEE PAGES 59-63.