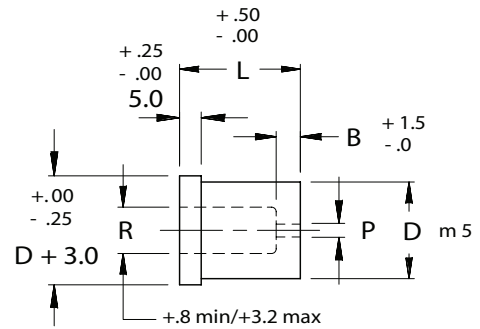
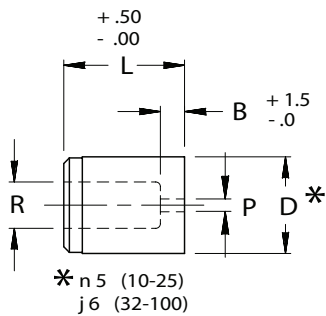


# BUTTON BLANKS

## WITH COUNTER BORE RELIEF



### Material

Steel: A2, HRC 58-60

### ORDER EXAMPLE:

(Reference page 4)

SPECIFY: QTY: TYPE "D" "L"

EXAMPLE: 6 MDB 16 28

EXAMPLE: 6 MIB 25 30

STANDARD ALTERATIONS SEE PAGES 68-73.

Complete design & CAD files visit [WWW.MOELLERMCD.COM](http://WWW.MOELLERMCD.COM)

| CATALOG NUMBER | BODY DIA D | DIE LAND B | RLF DIA R | DRILL SIZE P | OVERALL LENGTH "L" |    |    |    |    |    |    |
|----------------|------------|------------|-----------|--------------|--------------------|----|----|----|----|----|----|
|                |            |            |           |              | 20                 | 22 | 25 | 28 | 30 | 32 | 35 |
| M_B 08         | 8          | 4.0        | 4.0       | 1.2          | X                  | X  | X  | X  | X  | X  | X  |
| M_B 10         | 10         | 4.0        | 6.0       | 1.2          | X                  | X  | X  | X  | X  | X  | X  |
| M_B 13         | 13         | 5.0        | 8.0       | 1.4          | X                  | X  | X  | X  | X  | X  | X  |
| M_B 16         | 16         | 5.0        | 9.5       | 2.0          | X                  | X  | X  | X  | X  | X  | X  |
| M_B 20         | 20         | 5.0        | 12.0      | 2.8          | X                  | X  | X  | X  | X  | X  | X  |
| M_B 22         | 22         | 6.0        | 15.0      | 2.8          | X                  | X  | X  | X  | X  | X  | X  |
| M_B 25         | 25         | 6.0        | 17.5      | 4.4          | X                  | X  | X  | X  | X  | X  | X  |
| M_B 32         | 32         | 6.0        | 21.0      | 5.2          | X                  | X  | X  | X  | X  | X  | X  |
| M_B 38         | 38         | 8.0        | 27.0      | 5.6          |                    | X  | X  | X  | X  | X  | X  |
| M_B 40         | 40         | 8.0        | 27.0      | 5.6          |                    | X  | X  | X  | X  | X  | X  |