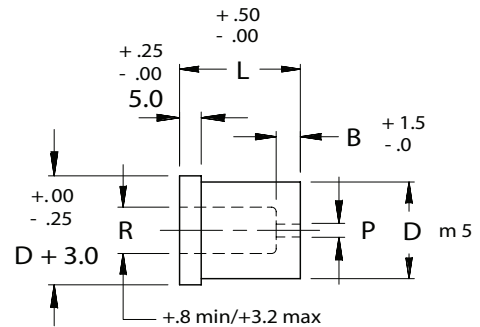
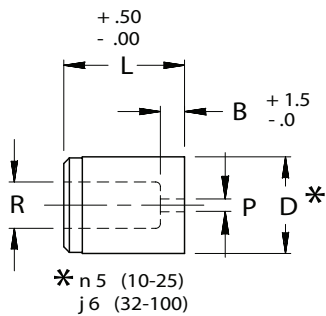


BUTTON BLANKS

WITH COUNTER BORE RELIEF



Material

Steel: A2, HRC 58-60

ORDER EXAMPLE:

(Reference page 4)

SPECIFY: QTY: TYPE "D" "L"

EXAMPLE: 6 MDB 16 28

EXAMPLE: 6 MIB 25 30

STANDARD ALTERATIONS SEE PAGES 68-73.

Complete design & CAD files visit WWW.MOELLERMCAD.COM

CATALOG NUMBER	BODY DIA D	DIE LAND B	RLF DIA R	DRILL SIZE P	OVERALL LENGTH "L"						
					20	22	25	28	30	32	35
M_B 08	8	4.0	4.0	1.2	X	X	X	X	X	X	X
M_B 10	10	4.0	6.0	1.2	X	X	X	X	X	X	X
M_B 13	13	5.0	8.0	1.4	X	X	X	X	X	X	X
M_B 16	16	5.0	9.5	2.0	X	X	X	X	X	X	X
M_B 20	20	5.0	12.0	2.8	X	X	X	X	X	X	X
M_B 22	22	6.0	15.0	2.8	X	X	X	X	X	X	X
M_B 25	25	6.0	17.5	4.4	X	X	X	X	X	X	X
M_B 32	32	6.0	21.0	5.2	X	X	X	X	X	X	X
M_B 38	38	8.0	27.0	5.6		X	X	X	X	X	X
M_B 40	40	8.0	27.0	5.6		X	X	X	X	X	X