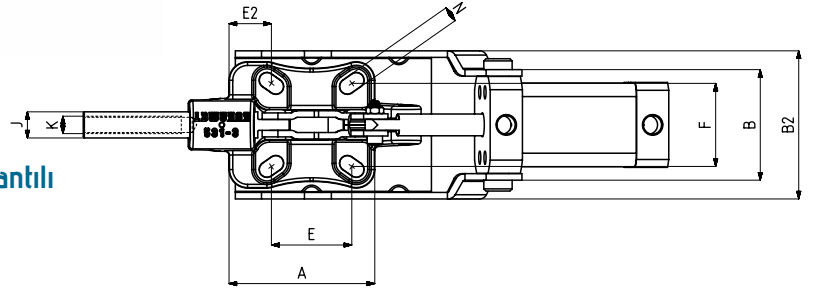
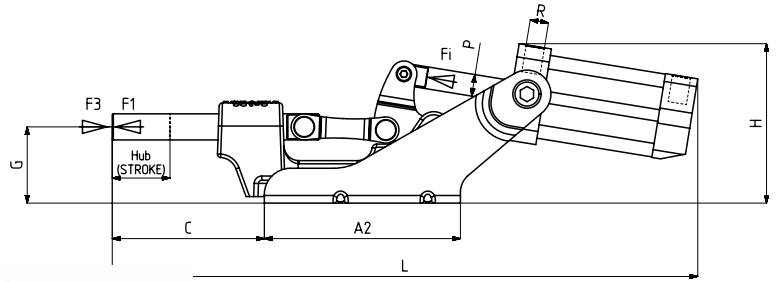



 673


MODEL NO	F1 (N)	F3 (N)	Fi (N)	Vn (dm ³)	STROK	AĞIRLIK (WEIGHT) (gr)	BAR
673 - 3 (Ø 12)	1500	3700	300	0,25	23	1090	6
673 - 3 (Ø 14)	2500	4000	500	0,51	23	1250	6

F1 : BASKI KUVVETİ (EXERTING FORCE), F3 : TUTMA KAPASİTESİ (HOLDING CAPACITY), Fi : UYGULAMA KUVVETİ (APPLIED FORCE)

Vn, 6 BAR BASINÇTA ÇİFT HAREKET İÇİN HAVA TÜKETİM MİKTARIDIR (Vn, AIR CONSUMPTION PER DOUBLE STROKE IN dm³ AT 6 BAR)



Ayak Tipi: Yatay Tabanlı, Döküm Gövdeli, Ön Bağlantılı
 Body Mounting Base: Horizontal, Casting, Tied Front

Sensör Kanallı - Kare Pistonlu
 With Square Piston and Sensor Slot



661
Sayfa/Page: 74



533
Sayfa/Page: 57



535-R-L
Sayfa/Page: 59



Pistonlar çift etkili, manyetik ve yastıklıdır.
 Pneumatic cylinders are double acting, magnetic and cushioning

MODEL NO	A	A2	B	B2	C	E ~	E2 ~	F ~	G	H	J	K	L	N	P	R	PİSTON Ø
673 - 3 (Ø 12)	67	90	51	68	70	32,5 - 41	17,5 - 21,5	35 - 41	35	73	12	M8	268	7 x 12	Ø 10	G1/8	25
673 - 3 (Ø 14)	67	100	58	68	70	32,5 - 41	17,5 - 21,5	35 - 41	35	80	14	M8	288	7 x 12	Ø 12	G1/8	32