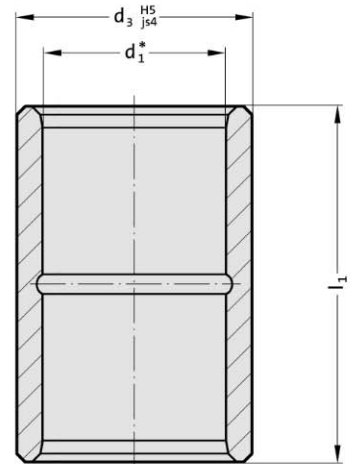


Guide bush, sintered ferrite carbonitrided with long-term lubrication, ISO 9448-2



2051.32.



Material:

Sintered ferrite of high purity, carbonitrided, long-term lubrication

Execution:

Bearing surfaces and outside diameter precision ground.

Slip-Fit Bonding:

The position of the bearing is given by push fit holes tolerance H5. The adhesive (order no. 281.648) provides optimum push retention whilst offering the following **advantages:**

- high accuracy and stiffness
- no problems to find position when changing bushings

We do not recommend to press fit for the same reasons mentioned above.

Note:

Notes on sliding type guides at the beginning of chapter D.

* Bearing clearance see pairing classification at the beginning of chapter D. Matching guide combinations, see selection matrix at the beginning of chapter D.

Assembly guide lines / Dimensional requirements and tolerances at the end of chapter D.

Ø 8 - Ø 12 not available in tolerance range red = .30.

- Tolerance range:
- yellow = .10
 - green = .20
 - red = .30

2051.32. Guide bush, sintered ferrite carbonitrided with long-term lubrication, ISO 9448-2

d ₁	8	11 12	15 16	19 20	24 25	30 32	38 40	48 50	60 63	80
d ₃	13.7	22	28	32	40	48	58	70	85	95.7
l ₁										
15	●									
23		●								
30		●	●	●	●	●	●			
37		●	●	●	●	●	●	●		
47			●	●	●	●	●	●		
60			●	●	●	●	●	●	●	●
77				●	●	●	●	●	●	
95						●	●	●	●	
110										●
120							●	●	●	●

Ordering Code (example):

Guide bush, sintered ferrite carbonitrided with long-term lubrication, ISO 9448-2

=2051.32.

Guide diameter d₁

30 mm = 030.

Length l₁

30 mm = 030.

Classification TOL

yellow = 10

Order No

=2051.32.030.030.10