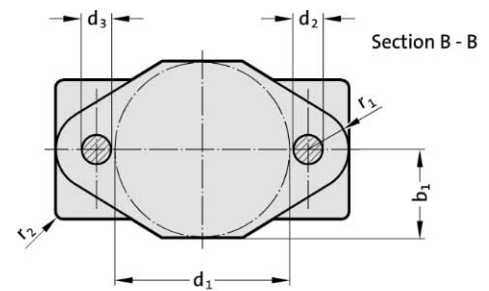
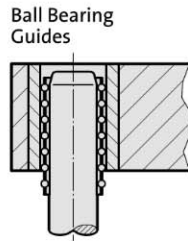
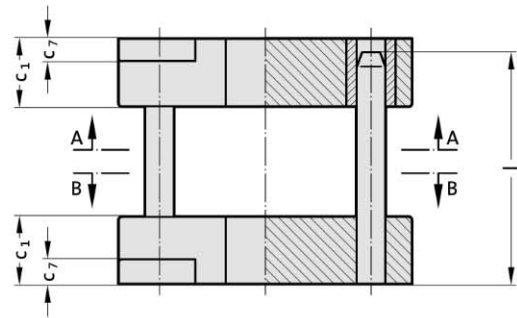
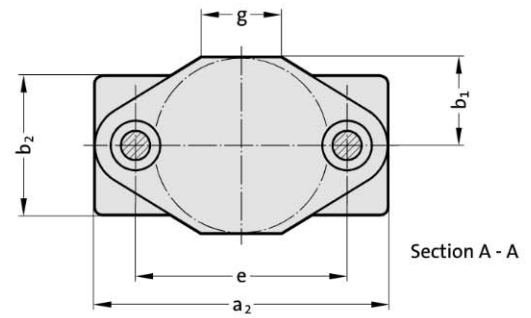




201.39.



Guide Elements

Faces front and rear fine machined after assembly – their perfect alignment permits use as datum reference.

201.39. Fine blanking die set

Order No	Work area												
	d ₁	a ₂	b ₁	b ₂	c ₁	c ₇	d ₂	d ₃	G	e	l	r ₁	r ₂
201.39.100.040	100	220	50	85	75	22	25	24	60	140	140	27	6
201.39.125.040	125	245	62	100	75	25	25	24	80	165	140	27	6
201.39.160.040	160	290	80	140	75	25	32	30	80	200	140	35	6
201.39.200.040	200	340	100	160	80	30	40	38	90	250	160	45	8
201.39.250.040	250	400	125	200	85	32	40	38	100	300	180	50	10